

Can care environments be sustainable?

Jacqui Smith of HomeSmiths in conversation with Robert Walton of The Lindhurst Group



Accora

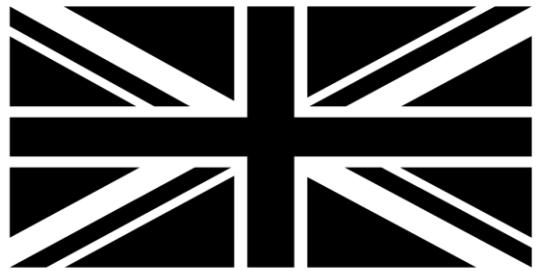
Content

- What does sustainable interior design mean?
- For designers, what are the environmental considerations?
- Changes we can all make



What do we mean by sustainable interior design?

Carbon
Neutral
Britain™





NATURE ITSELF RAISES A BARRIER AGAINST FLAMES

Phosphorus creates a barrier against the flame

Aluminum-oxide nanoparticles improve the flame-retardancy

Sulfur dioxide reduces and stabilizes the combustion process

FEED YOUR FANTASY

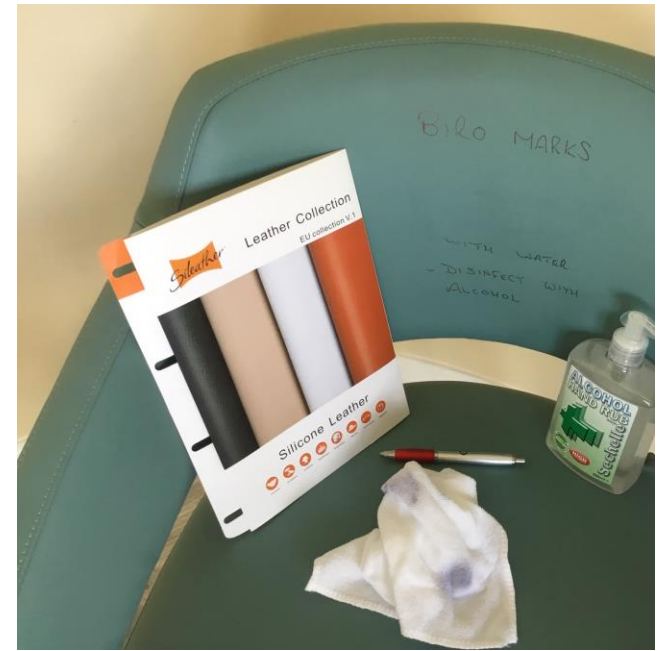
Kilkenny
Natural Cotton Leno

Silicone Leather

Do not bleach
Do not iron
Tumble dry in low temperature
Do not wring
Do not dry clean
For all machine temperatures
Protect against staining

The Kilkenny collection meets all relevant international flame-retardant standards, ensuring the comfort and softness of natural fibers and the strength and brightness colors

COEX





What can designers do?

Place orders in good time

Low emission paints

Low VOC products

Avoid design fads

Re-use and recycle packaging

Re-use and recycle

Encourage manufacturers to label furniture with disposal info

Inert materials that don't promote microbial growth

Environmentally conscious suppliers

Maximise natural light

Minimise waste

Sustainable materials

Easy clean materials

Interchangeable art

Thermal window treatments

Energy efficient lighting

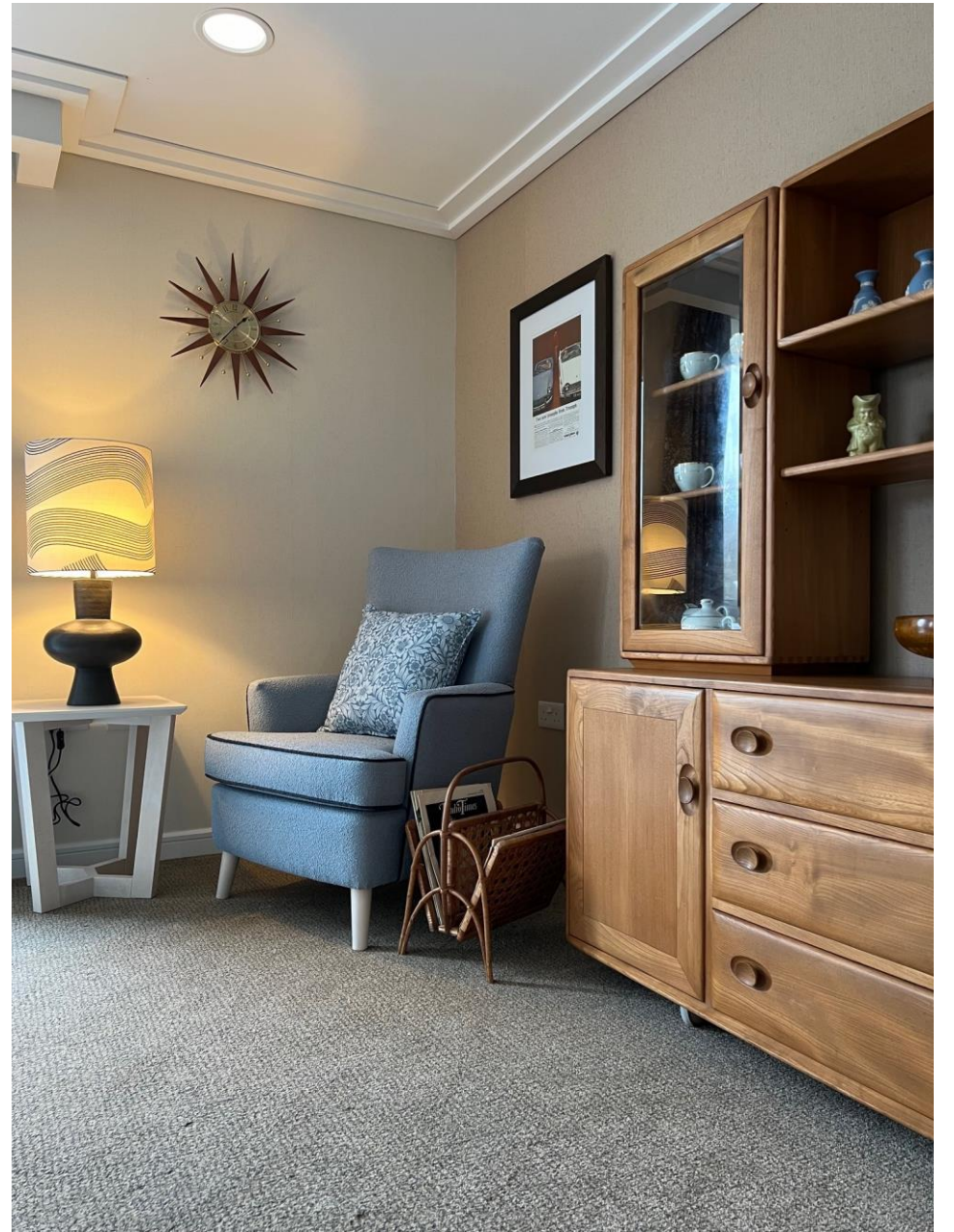
Incorporate biophilia

Flexible design

Use eco textures on chair backs

Furniture layout to maximise heating efficiency

Encourage exercise



Thank you and questions

Jacqui Smith

jacqui@homesmiths.co.uk

Robert Walton

Robert@lindhurstgroup.co.uk

Accora

Charter House, Barrington Road,
Orwell, Cambridge SG8 5QP

T: +44 01223 206100

E: info@accora.care

W: www.accora.care



Accora